

# Symptomatic Relief: Unda Plex Remedies to Support your Patient

Presented by Dr. Robert Abell, N.D., L.Ac.  
Part 1 of 2



GENESTRA  
BRANDS®



DOUGLAS  
LABORATORIES



Atrium Innovations Brands **ATRIUM**  
INNOVATIONS

RA Approved  
January 2022

# Speaker Disclosure

## Dr. Robert Abell, N.D., L.Ac., VNMI

I am a paid advisor to Atrium Innovations. I have no other conflicts of interest to disclose.

The Company assumes no liability for presenter's information, whether conveyed verbally or in these materials. All presentations represent the opinions of the presenter and do not represent the position or the opinion of the Company. Reference by the presenter to any specific product, process or service by trade name, trademark, or manufacturer does not constitute or imply endorsement or recommendation by the Company.

Seminars, teleconferences and webinars such as this are for educational purposes only and are intended for licensed health care practitioners.

Practitioners are solely responsible for the care and treatment provided to their own patients. These therapies are not substitutions for standard medical care. This presentation is intended for North American healthcare practitioners. U.S. healthcare practitioners, please note, product claims and dosing are in accordance with Health Canada regulations and have not been evaluated by the Food and Drug Administration (FDA). The information provided by speakers in this educational program, together with any written material, do not necessarily represent the view of Atrium Innovations and are not intended as medical advice.



GENESTRA  
BRANDS®



DOUGLAS  
LABORATORIES



Atrium Innovations Brands **ATRIUM**  
INNOVATIONS

# UNDA PLEXES: SYSTEM-SPECIFIC SPECIALTY FORMULATIONS



GENESTRA  
BRANDS®



DOUGLAS  
LABORATORIES



Atrium Innovations Brands **ATRIUM**  
INNOVATIONS

# Why Use UNDA Formulations

Located in Brussels and Harze, Belgium, UNDA is the largest homeopathic brand in Belgium

UNDA is world renown for the quality and effectiveness of their products



The word UNDA means undulating water

Rigorous preparation and attention to detail are applied in every aspect of the manufacture of remedies

UNDA's manufacturing process incorporates meticulous laboratory analysis of ingredients and formulations



GENESTRA  
BRANDS®



DOUGLAS  
LABORATORIES



Atrium Innovations Brands **ATRIUM**  
INNOVATIONS

# Why Use UNDA Formulations (*continued*)

**UNDA utilizes meticulous and distinctive Laboratory Analysis of remedies:**

**Column Chromatography** - Plants are identified by botanists, and specific related details are logged and retained on computer for future reference:

- Chromatography uses 4 curves of light (yellow, blue, red, black). Each product absorbs light differently so it can be uniquely identified. Each has its own fingerprint. Every year mother tinctures are analyzed to ensure that they are stable

**Infrared Spectrometry** - Analyzes inorganic and organic chemicals:

- Organic compounds are ground up and put in a gel. The analysis involves the compound migrating up the plate under a field of electricity

**Fluorometry** – Determines final products in solution:

- The substance is placed in a device that produces two curves – an excitation curve and an emitting curve
- This device provides a computer graph of the energy of the product. This graph is used to determine if the remedies are consistent from batch to batch



GENESTRA  
BRANDS®



DOUGLAS  
LABORATORIES



Atrium Innovations Brands **ATRIUM**  
INNOVATIONS

## Why Use UNDA Formulations *(continued)*

Unda incorporates the fundamental principles of homeopathic medicine, as founded by Samuel Hahnemann:

- Do no harm
- The body is capable of self-regulation
- Physiology prevails over pathology
- Restoring the individual's physiology is essential to healing his or her pathology
- The four pillars of health must also be taken into account with equal value given to: diet, drainage and elimination, psychological equilibrium; and balancing of the hereditary characteristics



GENESTRA  
BRANDS®



DOUGLAS  
LABORATORIES



Atrium Innovations Brands **ATRIUM**  
INNOVATIONS

# Unique System-specific Specialty Formulations

## UNDA Plexes:

- Are each a combination of well-thought-out ingredients that work together in synergy as a complete formulation
- Include homeopathic formulations prepared using low dilutions of plant extracts, mother tinctures and metal elements; as well as a unique selection of specialty supplements
- Address a diverse range of physiological systems (cardiovascular, cutaneous, digestive, endocrine, hepatic, immune, musculoskeletal, oral, nervous, respiratory and vascular systems)
- Are condition-specific, non-suppressive, user-friendly formulations
- Support both acute and chronic situations by providing symptomatic relief
- Are offered in a variety of formats (liquids, tablets, creams, powders)
- Include several medicine-cabinet type remedies
- Are user-friendly and support compliance

## Essential remedies for use in clinical practice



GENESTRA  
BRANDS®



DOUGLAS  
LABORATORIES



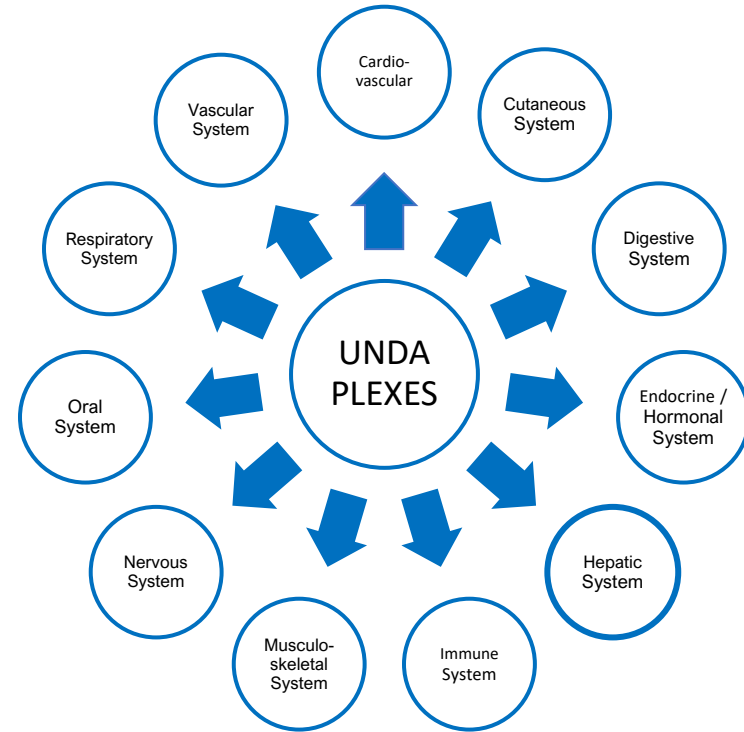
Atrium Innovations Brands

ATRIUM  
INNOVATIONS

# Unda Plexes



**Associated with  
Numerous Organ Systems**



GENESTRA  
BRANDS®



DOUGLAS  
LABORATORIES



Atrium Innovations Brands **ATRIUM**  
INNOVATIONS



# Unda Plexes & Their Organ System Association

| SYSTEM-SPECIFIC COMPLEX  | ASSOCIATED ORGAN SYSTEM         |
|--------------------------|---------------------------------|
| Acidum Phosphoricum Plex | Nervous System                  |
| Allium Cepa Plex         | Respiratory System              |
| Angiplex                 | Respiratory System              |
| Anti-wart Drops          | Cutaneous System, Immune System |
| Arnica Cream             | Musculoskeletal System          |
| Calendula Cream          | Cutaneous System                |
| Carduus Plex             | Digestive System                |
| Cheliderm Cream          | Vascular System                 |
| Chelidonium Plex         | Digestive System                |



GENESTRA  
BRANDS®



DOUGLAS  
LABORATORIES



Atrium Innovations Brands **ATRIUM**  
INNOVATIONS

# Unda Plexes & Their Organ System Association

| SYSTEM-SPECIFIC COMPLEX                        | ASSOCIATED ORGAN SYSTEM     |
|--|-----------------------------|
| Cholesterinum Plex                             | Hepatic System              |
| Cicatrisan Cream                               | Cutaneous System            |
| Cimicifuga Plex                                | Endocrine / Hormonal System |
| Drosera Plex                                   | Respiratory System          |
| Drosera Plex Cough Syrup                       | Respiratory System          |
| Echinsyr                                       | Immune System               |
| Febriplex                                      | Immune System               |
| Homeofresh Toothpaste (Chlorophyllum & Citrus) | Oral System                 |
| Juncturinum Plex                               | Musculoskeletal System      |
| Kalium Carbonicum Plex                         | Digestive System            |



GENESTRA  
BRANDS®



DOUGLAS  
LABORATORIES



Atrium Innovations Brands **ATRIUM**  
INNOVATIONS

# Unda Plexes & Their Organ System Association

| SYSTEM-SPECIFIC COMPLEX | ASSOCIATED ORGAN SYSTEM                           |
|-------------------------|---|
| Lobelia Plex            | Respiratory System                                |
| Magnelevures            | Cardiovascular, Musculoskeletal & Nervous Systems |
| Medulosseinum Plex      | Musculoskeletal System                            |
| Muco Coccinum           | Immune System                                     |
| Paeonia Plex            | Hepatic & Vascular Systems                        |
| Passiflora Plex         | Nervous System                                    |
| Proctosan Cream         | Vascular System                                   |
| Pyrogenium Plex         | Respiratory System                                |
| Sepia Plex              | Endocrine / Hormonal System                       |
| Solvarome               | Cutaneous System                                  |



GENESTRA  
BRANDS®



DOUGLAS  
LABORATORIES



Atrium Innovations Brands **ATRIUM**  
INNOVATIONS

# Poll



GENESTRA  
BRANDS®



DOUGLAS  
LABORATORIES



Atrium Innovations Brands **ATRIUM**  
INNOVATIONS

# Cardiovascular System



Magnelevures



GENESTRA  
BRANDS®



DOUGLAS  
LABORATORIES



Atrium Innovations Brands **ATRIUM**  
INNOVATIONS

# Magnelevures



## Organ System Applications:

Cardiovascular, Musculoskeletal, Nervous

Magnelevures is a unique vitamin, mineral and amino acid complex with primary components of Magnesium and Taurine. This formulation is a source of antioxidants and electrolytes; and can support the maintenance of proper muscle function (including the heart muscle), and provide support for the musculoskeletal, cardiovascular and nervous systems.

## Applications:

### Supports:

- Cardiovascular health
- Musculoskeletal health
- Nervous System health

### EACH SACHET (4 g) CONTAINS:

|   |        |
|---|--------|
| Magnesium (magnesium L-5-oxo-proline).....              | 150 mg |
| Taurine .....   | 100 mg |
| L-Glutathione .....                                     | 10 mg  |
| Vitamin B <sub>6</sub> (pyridoxine hydrochloride) ..... | 3 mg   |
| Thiamine (thiamine hydrochloride).....                  | 2.1 mg |



GENESTRA  
BRANDS®

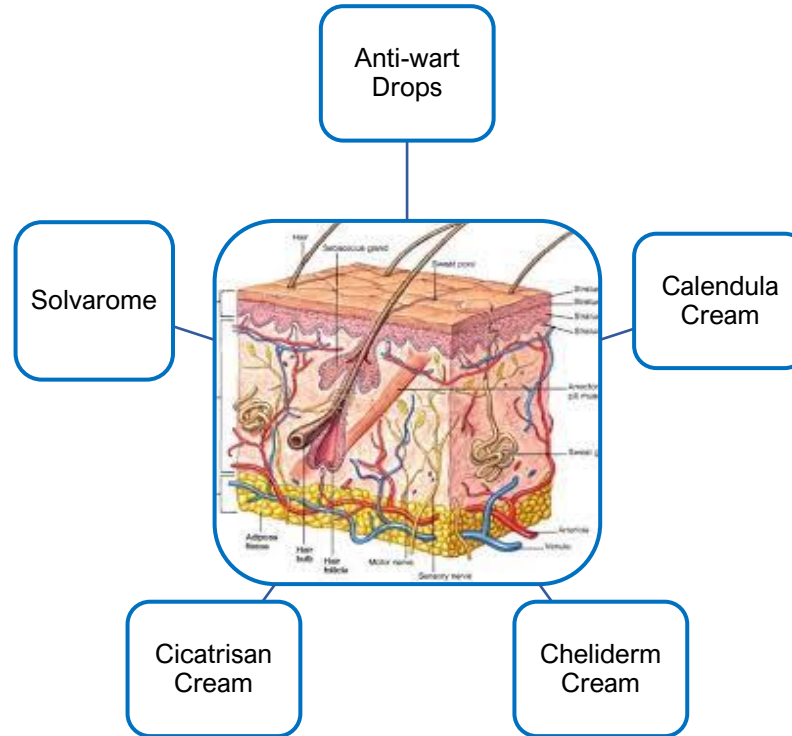


DOUGLAS  
LABORATORIES



Atrium Innovations Brands **ATRIUM**  
INNOVATIONS

# Cutaneous System



GENESTRA  
BRANDS®



DOUGLAS  
LABORATORIES



Atrium Innovations Brands **ATRIUM**  
INNOVATIONS

# Anti-wart Drops



**Organ System Applications:**  
Cutaneous, Immune

This combination of homeopathic remedies is formulated to help in addressing skin warts, skin eruptions and to support immune health. This oral formulation is an excellent adjunct to its topical companion, Cheliderm cream.

## Applications:

Supports healing:

- Skin warts
- Skin eruptions
- Dry itchy skin and itching pimples

## EACH DROP CONTAINS:

|   |     |
|---|-----|
| <i>Juglans regia</i> (English Walnut) Leaf and Rind .....   | .2X |
| <i>Buxus sempervirens</i> (Boxwood) Leaf and Twig .....     | .6X |
| <i>Oleander</i> (Rose Laurel) Leaf .....                    | .6X |
| <i>Stannum metallicum</i> (Tin) .....                       | 10X |
| <i>Taxus baccata</i> (Yew) Leaf and Twig .....              | .6X |
| <i>Vanadium metallicum</i> (Vanadium) .....                 | 10X |
| <i>Thuja occidentalis</i> (White Cedar) Leaf and Twig ..... | .8X |
| <i>Sulphur</i> (Sublimed Sulfur) .....                      | 10X |
| <i>Nitricum acidum</i> (Nitric Acid) .....                  | 10X |
| <i>Bufo rana</i> (European Toad) Venom .....                | 12X |



GENESTRA  
BRANDS®



DOUGLAS  
LABORATORIES



Atrium Innovations Brands **ATRIUM**  
INNOVATIONS



# Calendula Cream (back in stock mid-July)



**Organ System Applications:**  
Cutaneous

This Calendula Cream preparation is designed to support the relief of symptoms associated with minor cuts, skin lacerations and burns.

## **Applications:**

Supports healing:

- Minor cuts
- Lacerated wounds
- Skin burns

## **MEDICINAL INGREDIENT:**

*Calendula officinalis* (Marigold) Flowering Tops.....MT



GENESTRA  
BRANDS®



DOUGLAS  
LABORATORIES



Atrium Innovations Brands **ATRIUM**  
INNOVATIONS

# Cheliderm Cream



**Organ System Applications:**  
Cutaneous

This synergistic combination of *Calendula officinalis* and *Thuja occidentalis* supports the cutaneous systems. It has a healing effect while providing temporary relief for cutaneous warts. Cheliderm cream is an excellent adjunct remedy to Anti-wart Drops.

## **Applications:**

Supports healing:

- Skin warts
- Skin eruptions

## **MEDICINAL INGREDIENTS:**

*Calendula officinalis* (Marigold) Flowering Tops..... MT

*Thuja occidentalis* (White Cedar) Leafy Twig..... MT



GENESTRA  
BRANDS



DOUGLAS  
LABORATORIES



Atrium Innovations Brands **ATRIUM**  
INNOVATIONS

# Cicatrisan Cream



**Organ System Applications:**  
Cutaneous

Cicatrizing Cream provides relief of symptoms associated with skin irritations, burns, cuts and insect bites.

## Applications:

Supports:

- Soothing and healing minor skin irritations, burns, lacerated wounds, and cuts
- Regaining cytokine balance in the skin associated with insect bites, cuts and minor skin irritations
- Healing skin eruptions with cracks, dry skin and itchy skin

## Medicinal Ingredients:

*Calendula officinalis* (Marigold) Aerial Parts, Flowering . . . . MT  
*Phytolacca decandra* (Pokeweed) Root . . . . . MT  
*Bryonia dioica* (Bryonia) Root . . . . . MT  
*Balsamum peruvianum* (Balsam Peru) Balsam . . . . . MT  
*Dulcamara* (Bittersweet) Shoots . . . . . MT



GENESTRA  
BRANDS®



DOUGLAS  
LABORATORIES



Atrium Innovations Brands

ATRIUM  
INNOVATIONS

# The use of Calendula Cream VS Cicatrisan Cream

## Calendula Cream:

- Water soluble ointment
- Excellent for any type of skin lesion, burn, or abrasion of the skin
- Safe to use on face or for infected or irritated nipples with breast feeding
- Preferred to use in children



MEDICINAL INGREDIENT:  
*Calendula officinalis* (Marigold) Flowering Tops.....MT

## Cicatrisan Cream:

- Stronger than Calendula Cream for damaged skin
- “Go to” ointment for any abrasion, lesion on the skin
- Do NOT use around eyes, mouth, nipples or with children. Petroleum based



### Medicinal Ingredients:

*Calendula officinalis* (Marigold) Aerial Parts, Flowering . . . MT  
*Phytolacca decandra* (Pokeweed) Root . . . MT  
*Bryonia dioica* (Bryonia) Root . . . MT  
*Balsamum peruvianum* (Balsam Peru) Balsam . . . MT  
*Dulcamara* (Bittersweet) Shoots . . . MT



GENESTRA  
BRANDS®



DOUGLAS  
LABORATORIES



Atrium Innovations Brands

ATRIUM  
INNOVATIONS

# Solvarome



**Organ System Applications:**  
Cutaneous

Solvarome is a combination of synergistic water-soluble essential oils that have traditionally been found to have an antiseptic, deodorizing and healing effects on the skin.

## **Applications:**

Supports cleansing and healing:

- Minor skin cuts, abrasions and eruptions
- Dry itchy skin conditions

## **INGREDIENTS:**

Polysorbate 85, Water, Propylene Glycol, Lavandula angustifolia (Lavender) Oil, Rosmarinus officinalis (Rosemary) Leaf Oil, Thymus vulgaris (Thyme) Oil, Cupressus sempervirens Leaf/Nut/Stem Oil, Pelargonium graveolens Flower Oil



GENESTRA  
BRANDS®

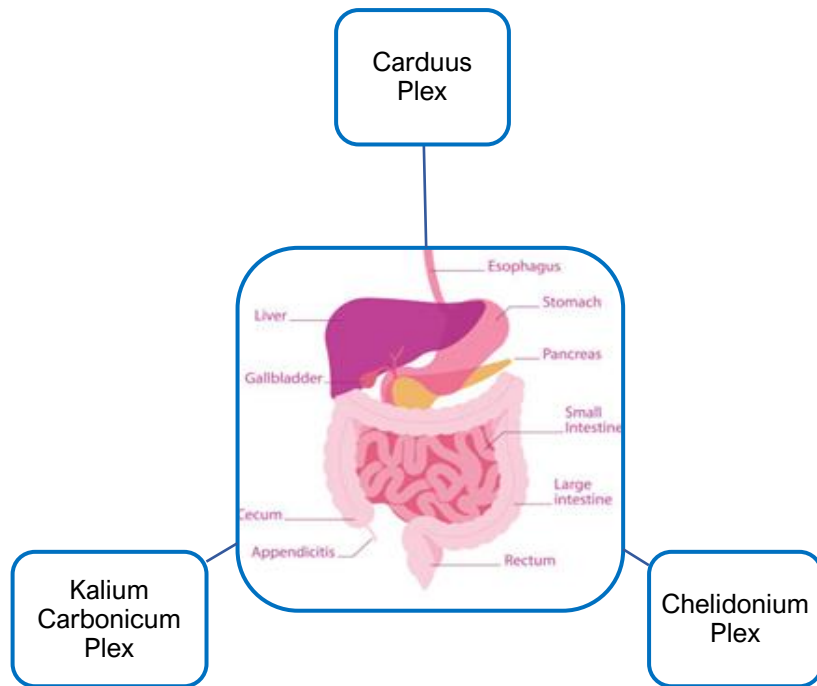


DOUGLAS  
LABORATORIES



Atrium Innovations Brands **ATRIUM**  
INNOVATIONS

# Digestive System



GENESTRA  
BRANDS®

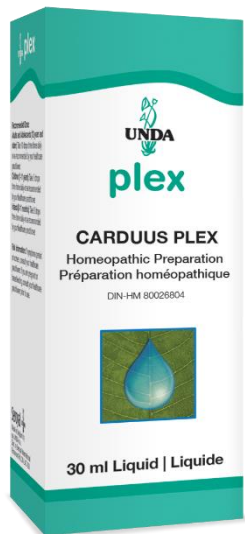


DOUGLAS  
LABORATORIES



Atrium Innovations Brands **ATRIUM**  
INNOVATIONS

# Carduus Plex



**Organ System Applications:**  
Digestive

Carduus Plex assists with the temporary relief of symptoms associated with poor digestion and colic.

## **Applications:**

Supports relief of:

- Indigestion
- Abdominal pain and cramps
- Heartburn
- Bloating
- Flatulence

## **EACH DROP CONTAINS:**

|  |    |
|--|----|
| <i>Carduus marianus</i> (Milk Thistle) Fruit .....                         | 2X |
| <i>Leptandra virginica</i> Underground Parts .....                         | 1X |
| <i>Lycopodium clavatum</i> (Clubmoss) Spore .....                          | 4X |
| <i>Chelidonium majus</i> (Greater Celandine) Rhizome/Root .....            | 2X |
| <i>Taraxacum officinale</i> (Common dandelion) Whole Flowering Plant ..... | 2X |
| <i>Cinchona officinalis</i> (Cinchona) Bark .....                          | 3X |
| <i>Belladonna</i> (Deadly Nightshade) Whole Plant .....                    | 4X |
| <i>Cholesterinum</i> (Cholesterol from Sheep Wool Grease) .....            | 4X |
| <i>Podophyllum peltatum</i> (May apple) Underground Parts .....            | 4X |
| <i>Colocynthis</i> (Colocynth) Fruit Pulp .....                            | 6X |



GENESTRA  
BRANDS®



DOUGLAS  
LABORATORIES



Atrium Innovations Brands **ATRIUM**  
INNOVATIONS

# Chelidonium Plex



**Organ System Applications:**  
Digestive

Among numerous functions, Chelidonium Plex has an impact on the digestive system and serves to temporarily alleviate symptoms associated with the over-indulgence of food and alcohol and to support detoxification.

## Applications:

Supports relief of:

- Digestive weakness and indigestion
- Abdominal pain and cramps
- Heartburn
- Bloating
- Flatulence

## EACH DROP CONTAINS:

|  |     |
|--|-----|
| <i>Chelidonium majus</i> (Greater celandine) Rhizome and Roots .....       | 10X |
| <i>Carduus marianus</i> (Milk thistle) Fruit.....                          | 3X  |
| <i>Solidago virgaurea</i> (Goldenrod) Inflorescence .....                  | 3X  |
| <i>Berberis vulgaris</i> (Barberry) Bark.....                              | 10X |
| <i>Dolichos pruriens</i> (Cowhage) Dried hairs from fruits .....           | 10X |
| <i>Iris versicolor</i> (Flag lily) Underground Parts.....                  | 10X |
| <i>Ptelea trifoliata</i> (Common hop tree) Leaf and Twig Bark .....        | 10X |
| <i>Taraxacum officinale</i> (Common dandelion) Whole Flowering Plant ..... | 10X |



GENESTRA  
BRANDS®



DOUGLAS  
LABORATORIES



Atrium Innovations Brands **ATRIUM**  
INNOVATIONS



# Kalium Carbonicum Plex



**Organ System Applications:**  
Digestive

Kalium Carbonicum Plex temporarily relieves gastro-intestinal symptoms associated with digestive upset.

## **Applications:**

Supports relief of:

- Laborious digestion or indigestion
- Stomach acidity
- Abdominal distension
- Bloating
- Stomach pain
- Colic

## **EACH DROP CONTAINS:**

|  |     |
|--|-----|
| <i>Carbo vegetabilis</i> (Vegetable Charcoal) .....                      | .6X |
| <i>Kali carbonicum</i> (Potassium carbonate anhydrous) .....             | .6X |
| <i>Asafoetida</i> (Devil's Dung) Gum Resin .....                         | .6X |
| <i>Cinchona succirubra</i> (Cinchona) Bark .....                         | .6X |
| <i>Lycopodium clavatum</i> (Clubmoss) Ripe Spores .....                  | .6X |
| <i>Nux moschata</i> (Nutmeg) Seeds .....                                 | .6X |
| <i>Nux vomica</i> (Poison Nut) Ripe Seeds .....                          | .6X |
| <i>Raphanus sativus var niger</i> (Black Radish) Underground Parts ..... | .6X |



GENESTRA  
BRANDS®

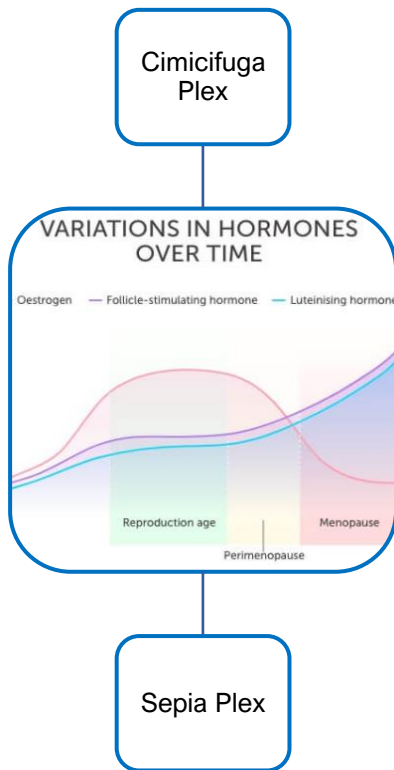


DOUGLAS  
LABORATORIES



Atrium Innovations Brands **ATRIUM**  
INNOVATIONS

# Endocrine/Hormonal System



GENESTRA  
BRANDS®



DOUGLAS  
LABORATORIES



Atrium Innovations Brands **ATRIUM**  
INNOVATIONS

# Cimicifuga Plex



**Organ System Applications:**  
Endocrine/Hormonal (female)

Cimicifuga Plex temporarily relieves common symptoms associated with premenstrual syndrome (PMS).

## Applications:

Relief of symptoms such as:

- Uterine cramps and abdominal pain
- Premenstrual and menstrual colic
- Irritability
- Headaches and backaches associated with PMS

## EACH DROP CONTAINS:

|  |     |
|--|-----|
| <i>Cimicifuga racemosa</i> (Black cohosh) Rhizome and Root.....            | 10X |
| <i>Caulophyllum thalictroides</i> (Blue cohosh) Underground Parts.....     | 10X |
| <i>Cuprum metallicum</i> (Copper).....                                     | 10X |
| <i>Gossypium herbaceum</i> Root Bark.....                                  | 10X |
| <i>Magnesia phosphorica</i> (Magnesium hydrogen phosphate trihydrate)..... | 10X |
| <i>Sepia officinalis</i> (Sepia) Dried Inky Secretion.....                 | 10X |
| <i>Platinum metallicum</i> (Platinum Sponge).....                          | 12X |
| <i>Oryctolagus cuniculus</i> (Rabbit) Hypothalamus.....                    | 14X |
| <i>Oryctolagus cuniculus</i> (Rabbit) Pituitary.....                       | 14X |
| <i>Oryctolagus cuniculus</i> (Rabbit) Thyroid.....                         | 14X |
| <i>Folliculinum</i> (Estrone).....   | 15X |
| <i>Histaminum hydrochloricum</i> (Histamine hydrochloride).....            | 15X |



GENESTRA  
BRANDS®



DOUGLAS  
LABORATORIES



Atrium Innovations Brands **ATRIUM**  
INNOVATIONS

# Sepia Plex



**Organ System Applications:**  
Endocrine/Hormonal (female)

Sepia Plex provides temporary relief of menopausal symptoms.

## Applications:

Relief of symptoms such as:

- Hot flashes
- Irritability
- Sleeplessness
- Vaginal sensitivity and muscle spasms

## EACH DROP CONTAINS:

|   |    |
|---|----|
| <i>Sepia</i> (Sepia) Dried Inky Secretion.....                    | 3X |
| <i>Aconitum napellus</i> (Aconite) Whole Plant.....               | 6X |
| <i>Melissa officinalis</i> (Lemon balm) Leaf and Shoot.....       | 2X |
| <i>Cimicifuga racemosa</i> (Black cohosh) Rhizome and Root.....   | 3X |
| <i>Sanguinaria canadensis</i> (Blood root) Underground Parts..... | 3X |
| <i>Sulphuricum acidum</i> (Sulfuric acid).....                    | 6X |
| <i>Valeriana officinalis</i> (Valerian) Root.....                 | 6X |
| <i>Lachesis mutus</i> (Bushmaster) Venom.....                     | 8X |
| <i>Platinum metallicum</i> (Platinum).....                        | 8X |



GENESTRA  
BRANDS®

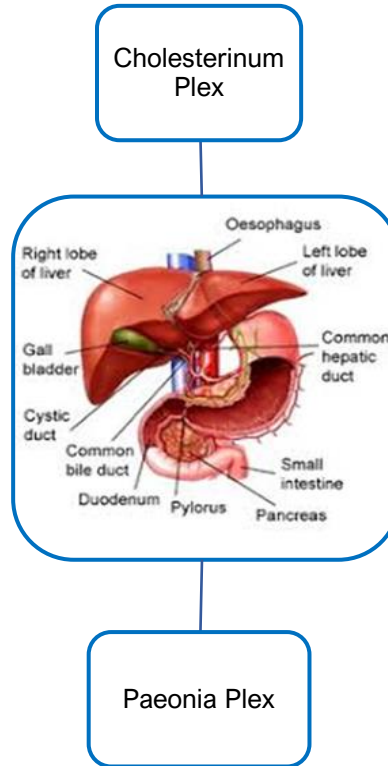


DOUGLAS  
LABORATORIES



Atrium Innovations Brands **ATRIUM**  
INNOVATIONS

# Hepatic System



GENESTRA  
BRANDS®

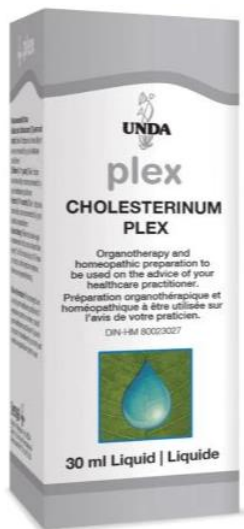


DOUGLAS  
LABORATORIES



Atrium Innovations Brands **ATRIUM**  
INNOVATIONS

# Cholesterinum Plex



**Organ System Applications:**  
Hepatic

Cholesterinum Plex helps to promote, support and maintain general liver health, facilitating improved metabolism and proper liver function.

## Applications:

Addresses:

- Insufficient liver function

## EACH DROP CONTAINS:

|   |      |
|---|------|
| <i>Cholesterinum</i> (Cholesterol from Sheep Wool Grease) ..... | 9CH  |
| <i>Oryctolagus cuniculus</i> (Rabbit) Liver .....               | 7CH  |
| <i>Oryctolagus cuniculus</i> (Rabbit) Lung .....                | 7CH  |
| <i>Cholesterinum</i> (Cholesterol from Sheep Wool Grease) ..... | 12CH |



GENESTRA  
BRANDS®

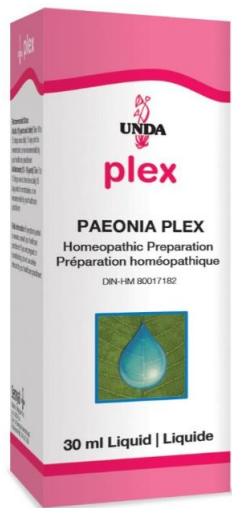


DOUGLAS  
LABORATORIES



Atrium Innovations Brands **ATRIUM**  
INNOVATIONS

# Paeonia Plex



**Organ System Applications:**  
Hepatic, Vascular

Paeonia Plex provides support for both the hepatic and vascular systems. This formulation helps to promote and maintain healthy liver function and, also assists with the temporary relief of symptoms associated with insufficient vascular health and swollen venous eruptions.

## Applications:

Supports:

- Efficient liver function
- Relief of painful, itchy swollen venous eruptions

## EACH DROP CONTAINS:

|   |     |
|---|-----|
| <i>Aesculus hippocastanum</i> (Horse Chestnut) Nut .....        | .3X |
| <i>Arnica montana</i> (Mountain Arnica) Underground Parts ..... | 4CH |
| <i>Graphites</i> (Black Lead) .....                             | 4CH |
| <i>Hamamelis virginiana</i> (Witch Hazel) Bark .....            | .4X |
| <i>Nitricum acidum</i> (Nitric Acid) .....                      | 4CH |
| <i>Nux vomica</i> (Poison Nut) Ripe Seeds .....                 | 4CH |
| <i>Paeonia officinalis</i> (Peony) Underground Parts .....      | .4X |
| <i>Sulphur</i> (Sublimed Sulfur) .....                          | .6X |



GENESTRA  
BRANDS®



DOUGLAS  
LABORATORIES



Atrium Innovations Brands **ATRIUM**  
INNOVATIONS

# Poll



GENESTRA  
BRANDS®



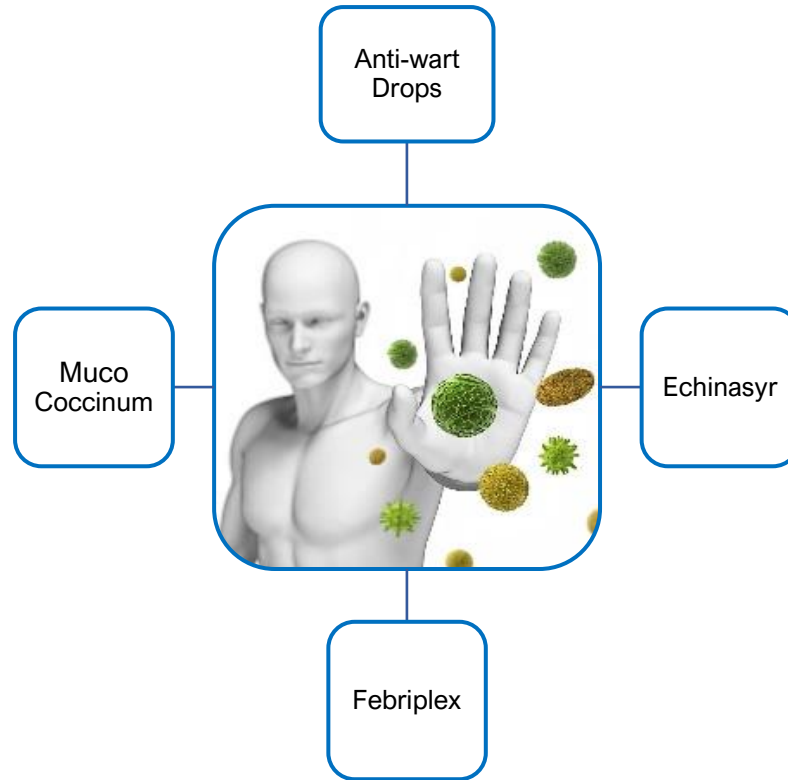
DOUGLAS  
LABORATORIES



Atrium Innovations Brands **ATRIUM**  
INNOVATIONS



# Immune System



GENESTRA  
BRANDS®



DOUGLAS  
LABORATORIES



Atrium Innovations Brands **ATRIUM**  
INNOVATIONS

# Anti-wart Drops



**Organ System Applications:**  
Cutaneous, Immune

This combination of homeopathic remedies is formulated to help in addressing skin warts, skin eruptions and to support immune health. This oral formulation is an excellent adjunct to its topical companion, Cheliderm cream.

## Applications:

Supports healing:

- Skin warts
- Skin eruptions
- Dry itchy skin and itching pimples

## EACH DROP CONTAINS:

|   |     |
|---|-----|
| <i>Juglans regia</i> (English Walnut) Leaf and Rind .....   | .2X |
| <i>Buxus sempervirens</i> (Boxwood) Leaf and Twig .....     | .6X |
| <i>Oleander</i> (Rose Laurel) Leaf .....                    | .6X |
| <i>Stannum metallicum</i> (Tin) .....                       | 10X |
| <i>Taxus baccata</i> (Yew) Leaf and Twig .....              | .6X |
| <i>Vanadium metallicum</i> (Vanadium) .....                 | 10X |
| <i>Thuja occidentalis</i> (White Cedar) Leaf and Twig ..... | .8X |
| <i>Sulphur</i> (Sublimed Sulfur) .....                      | 10X |
| <i>Nitricum acidum</i> (Nitric Acid) .....                  | 10X |
| <i>Bufo rana</i> (European Toad) Venom .....                | 12X |



GENESTRA  
BRANDS®

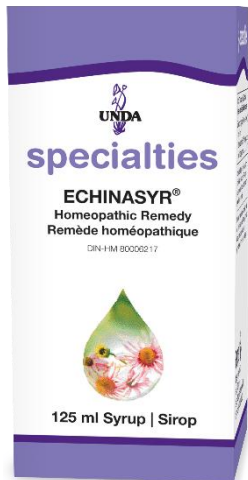


DOUGLAS  
LABORATORIES



Atrium Innovations Brands **ATRIUM**  
INNOVATIONS

# Echinasyr



**Organ System Applications:**  
Immune

Echinasyr is a preparation that contains pure extract of echinacea purpurea, which traditionally been used to support immune health and function. This formulation also contains Ribes nigrum and Rubus idaeus as non-medicinal ingredients; and is offered in a pleasant-tasting natural-berry flavoured liquid format.

## Applications:

Helps:

- To promote and maintain healthy immune function

## EACH TEASPOON CONTAINS:

*Echinacea purpurea* (Purple cone-flower) Aerial Parts ..... MT



GENESTRA  
BRANDS®



DOUGLAS  
LABORATORIES



Atrium Innovations Brands **ATRIUM**  
INNOVATIONS

# Febriplex



**Organ System Applications:**  
Immune

Febriplex is a homeopathic preparation used for temporary relief of symptoms associated with colds and flus, such as fever, chills, coughs and body aches.

## **Applications:**

Temporary relief of:

- Fevers and chills
- Cough
- Body aches

## **EACH TABLET CONTAINS:**

|  |     |
|--|-----|
| <i>Aconitum napellus</i> (Aconite) Whole Plant .....                     | .6X |
| <i>Arnica montana</i> (Leopard's bane) Underground Parts .....           | .8X |
| <i>Eupatorium perfoliatum</i> (Boneset) Aerial Parts .....               | 10X |
| <i>Belladonna</i> (Deadly nightshade) Whole Plant .....                  | .8X |
| <i>Gelsemium sempervirens</i> (Yellow jessamine) Underground Parts ..... | 12X |
| <i>Mercurius solubilis</i> (Hahnemann's soluble mercury) .....           | 10X |
| <i>Rhus toxicodendron</i> (Poison ivy) Leafy Unwoody Twigs .....         | .8X |



GENESTRA  
BRANDS®



DOUGLAS  
LABORATORIES



Atrium Innovations Brands **ATRIUM**  
INNOVATIONS

# Muco Coccinum



**Organ System Applications:**  
Immune

Muco Coccinum homeopathic nosode preparation (bacterial and viral fractions), formulated to stimulate the body's own defenses in order to combat the cold and influenza.

## Applications:

Supports relief of:

- Symptoms associated with the cold and flu such as: fever, nasal congestion, hoarseness, exhaustion, fatigue, headaches and body aches.

## EACH TABLET CONTAINS:

|  |      |
|--|------|
| <i>Influenzinum</i> .....  | 200K |
| <i>Klebsiella pneumoniae</i> .....                                 | 200K |
| <i>Micrococcus catarrhalis (Mucotoxin)</i> .....                   | 200K |
| <i>Micrococcus tetragenus (Peptostreptococcus tetradius)</i> ..... | 200K |



GENESTRA  
BRANDS®

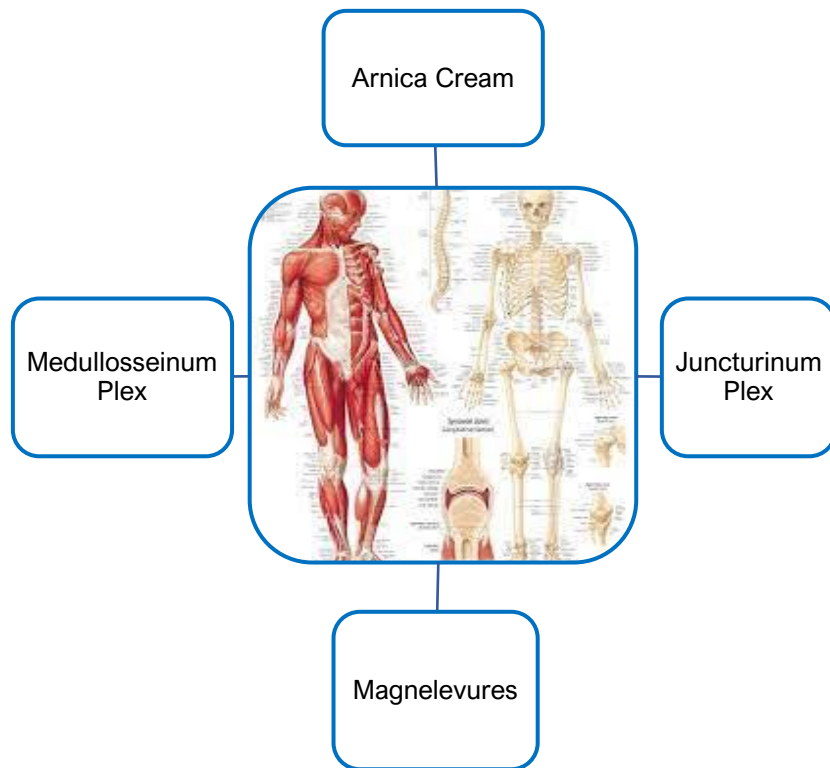


DOUGLAS  
LABORATORIES



Atrium Innovations Brands **ATRIUM**  
INNOVATIONS

# Musculoskeletal System



GENESTRA  
BRANDS®



DOUGLAS  
LABORATORIES



Atrium Innovations Brands **ATRIUM**  
INNOVATIONS

# Arnica Cream



**Organ System Applications:**  
Musculoskeletal

Arnica cream provides a synergistic combination of Arnica montana and Calendula officinalis as a topical support for the musculoskeletal system.

## Applications:

Supports:

- Cytokine balance in the musculoskeletal system
- Temporary relief of pain and other symptoms related to minor sprains, strains and soft tissue bruises
- Relief of muscle and joint pain and complaints

## MEDICINAL INGREDIENTS:

*Arnica montana* (Leopard's bane) Flowering Tops .....MT  
*Calendula officinalis* (Marigold) Flowering Tops .....MT



GENESTRA  
BRANDS®



DOUGLAS  
LABORATORIES



Atrium Innovations Brands **ATRIUM**  
INNOVATIONS

# Juncturinum Plex (back in stock mid-July)



**Organ System Applications:**  
Musculoskeletal

Juncturinum Plex provides an extraordinary formulation of organotherapy remedies selected for their ability to heal and strengthen specific components of the musculoskeletal system. This formulation is designed to promote and maintain overall bone and joint health.

## **Applications:**

Helps to support:

- Cytokine balance in the joints
- Bone metabolism
- Management of joint pain and stiffness
- Repair and healing of bone, cartilage, ligament and joints
- General bone and joint health

## **EACH DROP CONTAINS:**

|   |     |
|---|-----|
| <i>Oryctolagus cuniculus</i> (Rabbit) Cartilage .....         | 5CH |
| <i>Oryctolagus cuniculus</i> (Rabbit) Ligaments .....         | 5CH |
| <i>Oryctolagus cuniculus</i> (Rabbit) Knee Articulation ..... | 5CH |
| <i>Oryctolagus cuniculus</i> (Rabbit) Bone.....               | 5CH |



GENESTRA  
BRANDS®



DOUGLAS  
LABORATORIES



Atrium Innovations Brands **ATRIUM**  
INNOVATIONS



# Magnelevures



## Organ System Applications:

Cardiovascular, Musculoskeletal, Nervous

Magnelevures is a unique vitamin, mineral and amino acid complex with primary components of Magnesium and Taurine. This formulation is a source of antioxidants and electrolytes; and can support the maintenance of proper muscle function (including the heart muscle), and provide support for the musculoskeletal, cardiovascular and nervous systems.

## Applications:

### Supports:

- Cardiovascular health
- Musculoskeletal health
- Nervous System health

### EACH SACHET (4 g) CONTAINS:

|   |        |
|---|--------|
| Magnesium (magnesium L-5-oxo-proline).....              | 150 mg |
| Taurine .....   | 100 mg |
| L-Glutathione .....                                     | 10 mg  |
| Vitamin B <sub>6</sub> (pyridoxine hydrochloride) ..... | 3 mg   |
| Thiamine (thiamine hydrochloride).....                  | 2.1 mg |



GENESTRA  
BRANDS®



DOUGLAS  
LABORATORIES



Atrium Innovations Brands **ATRIUM**  
INNOVATIONS

# Medullosseinum Plex



**Organ System Applications:**  
Musculoskeletal

Medullosseinum Plex is a synergistic homeopathic and organotherapeutic preparation specifically formulated to support bone metabolism and facilitate the healing of the skeletal system.

## Applications:

Helps to support:

- Bone metabolism
- Relief of minor joint pain and backache

## EACH DROP CONTAINS:

|   |     |
|---|-----|
| <i>Oryctolagus cuniculus</i> (Rabbit) Spinal Cord.....                  | 7CH |
| <i>Arnica montana</i> (Mountain Arnica) Underground Parts .....         | 5CH |
| <i>Calcium phosphoricum</i> (Calcium hydrogen phosphate dihydrate)..... | 4CH |
| <i>Calendula officinalis</i> (Marigold) Flowering Tops.....             | 5CH |
| <i>Hypericum perforatum</i> (St. John's-wort) Whole Plant.....          | 5CH |
| <i>Pulsatilla</i> Whole Flowering Plant.....                            | 5CH |
| <i>Ruta graveolens</i> (Rue) Aerial Parts .....                         | 5CH |
| <i>Symphytum officinale</i> (Comfrey) Underground Parts.....            | 5CH |



GENESTRA  
BRANDS®



DOUGLAS  
LABORATORIES



Atrium Innovations Brands **ATRIUM**  
INNOVATIONS

# Poll



Poll 3. A current patient of yours comes into your office after having a running injury where they stepped in a hole and severely twisted the ankle.

Their GP says it looks like a severe ankle sprain as the X-Ray is negative for a fracture. You are busy and do not have time to see the patient, but you want to give them something to help the healing process.

Which Plex remedy would you give this patient?

Reference by the presenter to any specific product, process or service by trade name, trademark, or manufacturer does not constitute or imply endorsement or recommendation by Atrium Innovations. The information provided by speakers in this educational program together with any written material do not necessarily represent the view of Atrium Innovations and are not intended as medical advice. These therapies are not substitutions for standard medical care. Practitioners are solely responsible for the care and treatment provided to their own patients.



GENESTRA  
BRANDS®



DOUGLAS  
LABORATORIES



Atrium Innovations Brands **ATRIUM**  
INNOVATIONS

# Register for Part 2 of the Plex Webinar Series

## Symptomatic Relief:

### Unda Plex Remedies to Support your Patient, part 2 *(individual registration required for each part)*



Presented by: **Dr. Robert Abell ND LAc**

Wednesday, April 27, 2022

8:00 – 9:30 PM EST/ 5:00 – 6:30 PM PST

To register for our upcoming webinars, please visit:

[www.Seroyal.ca/seminars-webinars](http://www.Seroyal.ca/seminars-webinars)



GENESTRA  
BRANDS®



DOUGLAS  
LABORATORIES



Atrium Innovations Brands **ATRIUM**  
INNOVATIONS

# Thank you!



GENESTRA  
BRANDS®



DOUGLAS  
LABORATORIES



Atrium Innovations Brands **ATRIUM**  
INNOVATIONS